



RIP (Phospho Ser166) rabbit pAb

货号	YP-Ab-18129
同位型	IgG
应用	WB;IHC
种属	Human;Rat;Mouse;
靶点	RIP
简介	>>NF-kappa B signaling pathway;>>Apoptosis;>>Necroptosis;>>Toll-like receptor signaling pathway;>>NOD-like receptor signaling pathway;>>RIG-I-like receptor signaling pathway;>>Cytosolic DNA-sensing pathway;>>TNF signaling pathway;>>Alcoholic liver disease;>>Pathogenic Escherichia coli infection;>>Shigellosis;>>Salmonella infection;>>Hepatitis C;>>Human cytomegalovirus infection;>>Epstein-Barr virus infection;>>Human immunodeficiency virus 1 infection
基因名称	RIPK1 RIP RIP1
蛋白名称	RIP (Ser166)
免疫原	Synthesized phosho peptide around human RIP (Ser166)
特异性	This antibody detects endogenous levels of Human RIP (phospho-Ser166)
组成	Liquid in PBS containing 50% glycerol, 0.5% BSA and 0.02% sodium azide.
来源	Polyclonal, Rabbit,IgG
稀释	WB 1:500-2000;IHC 1:50-300
纯化工艺	The antibody was affinity-purified from rabbit serum by affinity-chromatography using specific immunogen.
其他名称	Receptor-interacting serine/threonine-protein kinase 1 (EC 2.7.11.1) (Cell death protein RIP) (Receptor-interacting protein 1) (RIP-1) (Serine/threonine-protein kinase RIP)
实测条带	73kD
功能	catalytic activity:ATP + a protein = ADP + a phosphoprotein.,function:Promotes apoptosis and activation of NF-kappa-B. Required for TNFRSF1A mediated activation of NF-kappa-B.,PTM:Autophosphorylated on serine and threonine residues.,PTM:Proteolytically cleaved by caspase-8 during TNF-induced apoptosis. Cleavage abolishes NF-kappa-B activation and enhances pro-apototic signaling through the TRADD-FADD interaction.,similarity:Belongs to the protein kinase superfamily. TKL Ser/Thr protein kinase family.,similarity:Contains 1 death domain.,similarity:Contains 1 protein kinase domain.,subunit:Binds to the death domain of TNFRSF6 and TRADD. Is recruited by TRADD to TNFRSF1A in a TNF-dependent process. Binds RIPK3, UBCE7IP1 isoform 3 (ZIN), EGFR, IKBKKG, TRAF1, TRAF2 and TRAF3. Interacts with BNLF1. Inter
浓度	1 mg/ml
储存	-15°C to -25°C/1 year(Do not lower than -25°C)

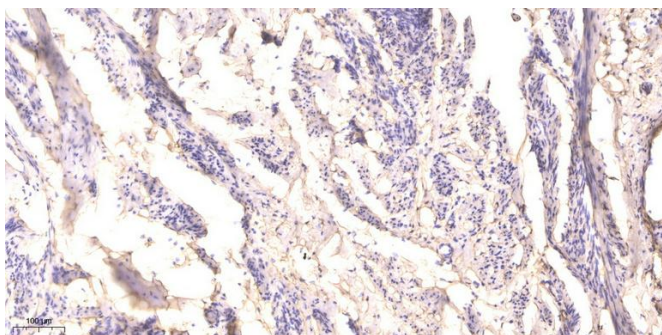
有关注意事项

Avoid repeated freezing and thawing!

使用建议

This product can be used in immunological reaction related experiments. For more information, please consult technical personnel.

Products Images



Immunohistochemical analysis of paraffin-embedded humancervical carcinoma.1,Antibody was diluted at 1:200(4° overnight).2,Tris-EDTA,pH9.0 was used for antigen retrieval.3.Secondary antibody was diluted at 1:200(roomtemperature,45min).